

Promise Solutions

Debris Photos - Descriptions & Examples

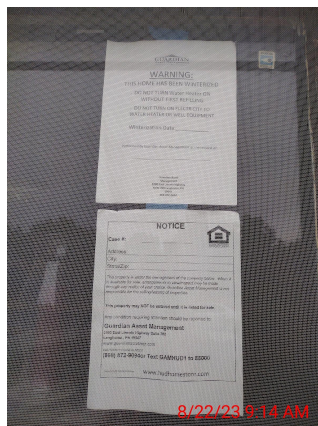
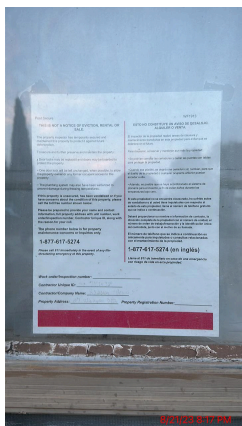


Consider Before Beginning

- Items that add value to the property, are in good condition, and are an integral part of the property may or may not be removed. Most major appliances must remain. Microwaves are a call from site item. (Call from site with questions about items.)
- All trash cans on the property must be emptied. Debris must not be left at the curb.
- Look on the work order for special personal property notices/instructions. Depending on the type of property there are special rules for “personals”; which may include things like jewelry, clothes, etc.
- If you are unsure of how [to calculate debris visit this link](#) or search: “Calculator Soup Cubic Yards”. Be mindful of inches vs feet on the calculator.

Address Verification

Street sign, house number, lockbox (with code), keycode & client notice sign



Debris Photos - Descriptions & Examples



BEFORE

Trailer Measurement Photos (Empty)

Dimensions of an empty trailer. Length, width, and height.

Trailer Load Photos (Empty)

The entire trailer is seen completely empty.

The number one is shown written or by hand for the first load.

Each load requires both the empty shot and the numbered shot. Load #1, Load #2, Load #3, Etc.



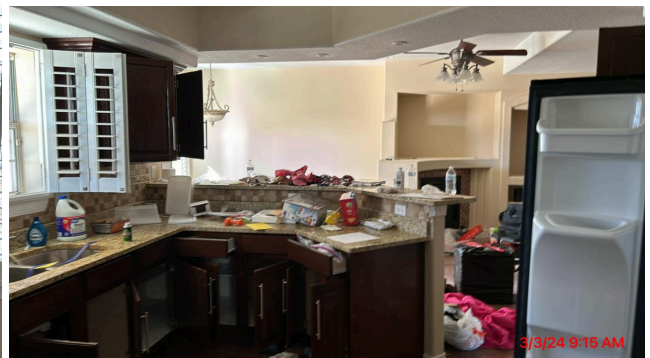
Entire Property With Debris

Full interior and exterior photos showing all debris.

Someone will check the total CY from these photos and verify using trailer load measurement.

Attics, crawlspaces, sheds, closets, etc are seen.

All cabinets and drawers are open and visible.



Debris Photos - Descriptions & Examples

DURING

Trailer Load Progress

Showing photos of the trailer at $\frac{1}{4}$, $\frac{1}{2}$, $\frac{3}{4}$, and full are required.

Showing people loading trailer(s) and gathering debris.

Noting this on a whiteboard or paper with the load in the background helps approvals.



Debris Photos - Descriptions & Examples

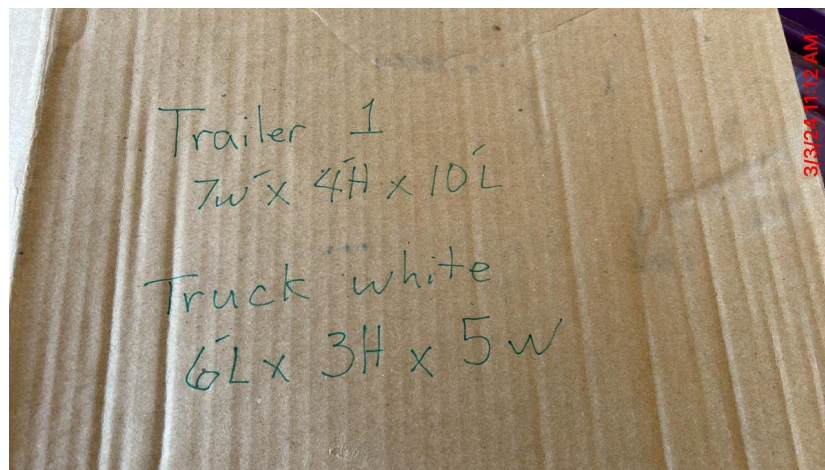
Finished Load Photos & Measurements

Complete or fully loaded trailer perspective shot.

Complete or fully loaded trailer measurement photos showing the length, width, & height of debris.

Ex: If the trailer is 4FT tall but the debris is only 2FT high, the height measurement would be 2FT. Show close up and perspective shot of tape measure for each measurement.

Notating "Trailer Load 1 Full _____"



Special Note:

Take separate empty, progress, and full photos for each load.

Notate the load number visibly with fingers or whiteboard.

Debris Photos - Descriptions & Examples

AFTER

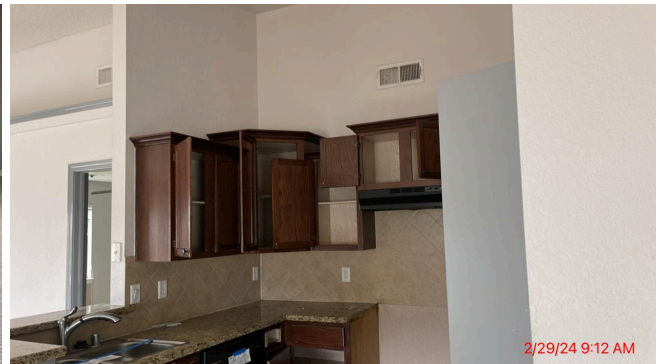
Entire Property Clear Of Debris

Full interior and exterior photos showing no debris.

Attics, crawlspaces, sheds, closets, etc are seen.

All cabinets and drawers are open and visible.

Trash cans empty and placed in garage or rear (if no garage is present).



Dump Receipts

Some clients require dump receipts. Photo and submit.

Before Submitting Checklist (If you find an item missing, call from site.)

- Did each load have an empty trailer photo?
- Did each load have trailer measurements before?
- Did each load have trailer measurements showing the loaded debris?
- Did each load show progress photos?
- Are the photos proving there is no debris on this property anywhere?

Ex: If someone/squatter came and dumped/lived here (front, rear, attic, cabinet) could we show that it was clear when we left?